



Four Time Winner of the  
Retail Packaging Association  
Distributor of the Year Award.

See our line of  
Sustainable Packaging Products on Pages 2 - 3

800.323.1609  
[www.howardpkg.com](http://www.howardpkg.com)

**SUSTAINABLE PACKAGING**



All of Howard's recycled shopping bags and paper bags are 'bag ban compliant'.

Reusable bags can be made to your size and color specifications. Minimums apply.



Recycled kraft shopping bags are made from 100% recycled paper with a minimum of 95% post consumer recycled content... and they are compostable.



Recycled white shopping bags are made with minimum of 40% post consumer recycled content and are recyclable in curbside recycling programs.





## Recycled and Reusable Packaging

Howard Packaging's line of environmentally friendly packaging products.

We can custom print products for you from the following materials:

- Paper shoppers made from up to 95% post consumer waste.
- Paper merchandise bags made from 40% post consumer waste.
- Tissue made from 60% post industrial and 10% post consumer recycled content.
- Plastic bags made with up to 25% post consumer waste.
- Gift boxes made with up to 80% post consumer waste.
- Reusable totes made from cotton or non woven polypropylene.

Call us today and let us help you to develop a more sustainable packaging program.



Please check our website [www.howardpkg.com](http://www.howardpkg.com) for the most up to date information on our SUSTAINABLE PACKAGING PRODUCTS.



### Custom Printed Natural Kraft Shopping Bags

- 100% recycled kraft with a minimum of 95% post consumer recycled content.
- Recyclable in curbside recycling programs.
- Compostable(when available)



### Custom Printed Recycled White Kraft Shopping Bags

- White Kraft paper is made from 40% post consumer recycled content making it 'bag ban compliant'.
- Recyclable in curbside recycling programs.



## Recycled Paper Shopping Bags

- Minimum order 6,000 bags printing 1 color <50% ink coverage.
- All bags are 'bag ban compliant'.
- Bags are recyclable in almost all curbside recycling programs.
- Guaranteed no over or under run... you get just what you ordered.



**Up to 3 color and heavy ink coverage available**  
**CALL FOR QUOTE**

Natural Kraft Prices are for <50% ink coverage & up to 3 color printing.

White Kraft prices are for four side printing and 3 color printing.

Natural Kraft



### Custom Printed Shopping Bags

Size	Case Pack	Price per thousand		
		6M	10M	25M
<b>5.5 x 3.25 x 8.38</b>				
Natural Kraft	250	n/a	487.00	420.00
White Kraft	250	n/a	n/a	453.00
<b>5.5 x 3.25 x 13.25</b>				
Natural Kraft	250	n/a	507.00	435.00
White Kraft	250	n/a	n/a	458.00
<b>8 x 4.75 x 10.25</b>				
Natural Kraft	250	n/a	52.000	450.00
White Kraft	250	618.00	448.00	373.00
<b>10 x 5 x 13</b>				
Natural Kraft	250	n/a	573.00	515.00
White Kraft	250	688.00	510.00	432.00
<b>10 x 7 x 12</b>				
Natural Kraft	250	n/a	605.00	535.00
White Kraft	250	n/a	n/a	n/a
<b>13 x 7 x 13</b>				
Natural Kraft	200	n/a	622.00	555.00
White Kraft	200	813.00	628.00	545.00
<b>13 x 7 x 17</b>				
Natural Kraft	200	n/a	685.00	612.00
White Kraft	200	902.00	710.00	628.00
<b>14.5 x 9 x 16.25</b>				
Natural Kraft	200	n/a	775.00	703.00
White Kraft	200	1015.00	815.00	727.00
<b>16 x 6 x 12</b>				
Natural Kraft	200	n/a	647.00	577.00
White Kraft	200	805.00	613.00	532.00
<b>18 x 7 x 18</b>				
Natural Kraft	200	n/a	787.00	702.00
White Kraft	200	953.00	755.00	672.00



howard packaging

White Kraft



Free design services, the widest selection of packaging materials both domestic and imported, and professional advice from the best trained sales group in the industry, Howard Packaging is your source.



Tell a story through four-color offset printing.

Choose your handle style from soft rope or special weaves to custom die cuts or even faux leather.





## Your packaging is your image...is yours saying what it should?

We can help you design a custom packaging program that will enhance your brand and achieve the creative impact that you need in today's competitive market.

Define your image with paper: natural or bleached white, gloss or matte laminated, and even overall embossed.



2012 Retail Packaging Association Best Single Packaging Product.





## Recycled Natural Kraft and White Shopping Bags

Recycled Natural Kraft made from 95% post consumer recycled paper.



Price per case

Size	Case Pack	1 - 9	10 - 19	20+
<b>Recycled Natural Kraft</b>				
5.5 x 3.25 x 8.38	250	73.20	67.00	60.30
5.5 x 3 x 13	250	79.00	73.20	65.80
8 x 4.75 x 10.5	250	82.90	76.30	68.10
10 x 5 x 13.5	250	98.90	92.90	84.30
13 x 7 x 13	250	106.70	94.10	90.60
13 x 7 x 17.5	250	109.60	100.50	92.00
14 x 9.5 x 16.25	200	114.20	106.00	97.00
16 x 6 x 12	250	110.90	104.10	90.30
18 x 7 x 18.75	200	84.10	77.00	70.90

### White Kraft

8 x 4.75 x 10.5	250	90.40	83.30	77.30
10 x 5 x 13.5	250	105.40	97.00	89.80
13 x 7 x 13	250	135.70	127.40	117.70
13 x 7 x 17.5	250	144.20	133.10	121.40
14 x 9.5 x 16.25	200	133.80	123.10	114.00
16 x 6 x 12	250	134.80	124.00	114.90
18 x 7 x 18.75	200	109.90	99.80	91.40





## Post Printed Shopping Bags

Free Plates on first time orders (restrictions apply).



### Recycled Natural Kraft Printed, One Color

Size	Case Pack	one side		two sides	
		500	500	500	500
5.5 x 3.25 x 8.38	250	0.43		n/a	
5.5 x 3.25 x 13	250	0.45			
8 x 4.75 x 10.25	250	0.43			
10 x 5 x 10	250	0.45			
10 x 7 x 12	250	0.50			
13 x 7 x 13	250	0.52		Add \$.20 for	
13 x 7 x 17	250	0.55		2nd side print	
14 x 10 x 15	250	0.62			
16 x 6 x 12	250	0.50			
16 x 6 x 19	200	0.59			
18 x 7 x 18	200	0.65			

Prices are per bag

### Recycled White Kraft Printed, One Color

Size	Case Pack	one side		two sides	
		500	500	500	500
5.5 x 3.25 x 8.38	250	0.43		n/a	
5.5 x 3.25 x 13	250	0.50			
8 x 4.75 x 10.25	250	0.45			
10 x 5 x 10	250	0.50			
10 x 7 x 12	250	0.54			
13 x 7 x 13	250	0.58		Add \$.20 for	
13 x 7 x 17	250	0.58		2nd side print	
14 x 10 x 15	250	0.69			
16 x 6 x 12	250	0.57			
16 x 6 x 19	200	0.65			
18 x 7 x 18	200	0.70			

Prices are per bag

### Recycled Natural Kraft Hot Stamp, One Color

Add \$.12 per side extra for hot stamp

### Recycled White Kraft Hot Stamp, One Color

Add \$.12 per side extra for hot stamp

#### INK PRINTING

Fast and economical, ink printing is a process through which ink is transferred from a flexible plate to a product's surface. Ink printing is best for 1- or 2-color designs when tight registration is less critical. It's ideal for printing uncoated boxes and bags allowing for better ink absorption.

#### HOT STAMPING

For a metallic image, hot stamping is the best option. A plate is created, then through heat and pressure, the foil is transferred to the surface of the product. We offer a wide range of foil colors including metallic, matte and gloss.

## Eurototes

High end, Euro-style shopping bags with macramé handles, reinforced turn tops and cardboard bottoms.



### Gloss & Matt Eurototes

Size	Max Print	Case Pack	
8 x 4 x 10 x 4	6 x 5	100	
13 x 5 x 10 x 5	8 x 6	100	<b>CONTACT US</b>
16 x 6 x 12 x 6	10 x 6	100	
20 x 6 x 16 x 6	10 x 6	50	<b>FOR QUOTE</b>

**GLOSS COLORS:**  
Silver, White & Black.

**MATTE COLORS:**  
Silver, White, Black, Ivory, Chocolate, Hunter Green, Hot Pink & Navy

## Paper Merchandise Bags

Recycled Natural Kraft made from minimum 40% post consumer recycled material.



### Recycled Natural Kraft and White Price per case

Size	Case Pack	Price per case		
		1 - 9	10 - 19	20+
<b>Recycled Natural Kraft</b>				
6.25 x 9.25	1000	38.30	35.60	33.50
8.5 x 11	1000	54.80	51.00	48.00
12 x 15	1000	86.80	80.70	76.00
12 x 2.75 x 18	500	64.40	59.90	56.40
14 x 3 x 21	500	80.90	75.20	70.80
16 x 3.75 x 24	500	109.20	101.50	95.50
<b>White</b>				
6.25 x 9.25	1000	50.10	47.00	44.20
8.5 x 11	1000	70.80	65.80	62.00
12 x 15	1000	113.70	105.60	99.50
12 x 2.75 x 18	500	82.80	77.00	72.50
14 x 3 x 21	500	108.00	100.40	94.50
16 x 3.75 x 24	500	136.10	126.50	119.10





## Presentation Pop-Up Gift Card Boxes



**B28123**  
Gloss Red  
(gold interior)



**B28116**  
Natural Kraft  
(white interior)



**B28117**  
Gloss White  
(white interior)



**B28118**  
Silver Gloss  
(silver interior)



**B28120**  
Gloss Black  
(silver interior)



**B28122**  
Gold Metallic  
(gold interior)

### Presentation Pop-Up Gift Card Boxes Price per case

Size	Case Pack	1 - 9	10 - 19	20
4.63 x 3.38 x .63	100	156.90	144.80	134.50

## GABLE BOXES



### GABLE BOXES

6"X4"X4"

8"X4-7/8"X5-1/4"

8-7/8"X5X3-1/2"

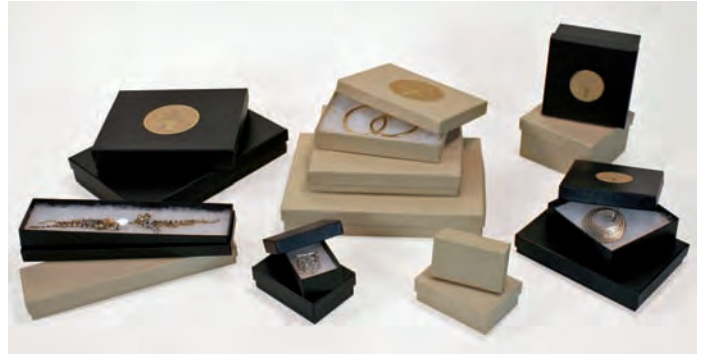
9-1/2"X5"X5"

Natural Kraft Pinstripe OR White Gloss

**CALL FOR QUOTE**

## Jewelry Boxes

Two piece set up, cotton filled boxes.



Size	White Gloss and Natural Kraft		Price per case	
	Case Pack	1 - 9	10 - 19	20
1.75 x 1.25 x .63*	100	38.40	35.50	32.70
2.5 x 1.5 x .88	100	38.50	35.60	32.90
3 x 2 x 1	100	43.10	39.90	36.80
3.5 x 3.5 x 1	100	51.80	47.90	44.00
3.5 x 3.5 x 2	100	64.00	59.30	54.40
3.63 x 2.63 x 1.25*	100	63.00	58.20	53.70
5.25 x 3.75 x .88	100	61.00	56.50	51.90
6 x 5 x 1	50	42.30	39.10	36.10
8 x 2 x .88	100	56.40	52.20	48.00
8 x 5.5 x 1.25	50	52.90	48.90	45.10
8 x 5.5 x 2*	50	58.90	54.50	50.30

Size	Black Pinstripe		Price per case	
	Case Pack	1 - 9	10 - 19	20
2.5 x 1.5 x .88	100	48.70	44.70	41.60
3 x 2 x 1	100	56.00	51.30	47.80
3.5 x 3.5 x 1	100	69.80	64.00	59.50
3.5 x 3.5 x 2	100	77.30	71.50	66.10
5.25 x 3.75 x .88	100	72.60	67.20	62.10
6 x 5 x 1	50	57.90	53.10	49.40
8 x 2 x .88	100	66.90	61.90	57.20
8 x 5.5 x 1.25	50	72.70	66.70	62.00

\* White Gloss only

## Apparel Boxes

Two piece pop up style.



Size	White Gloss		Price per case	
	Case Pack	1 - 9	10 - 19	20
10 x 7 x 1.25	100	53.50	51.60	44.50
11.5 x 5.5 x 1.5	100	75.90	72.90	59.40
11.5 x 8.5 x 1.63	100	57.80	55.30	45.00
15 x 9.5 x 2	100	68.00	65.70	56.00
17 x 11 x 2.5	50	59.20	56.90	47.70
19 x 12 x 3	50	73.40	70.60	59.20
24 x 14 x 4	25	61.60	59.20	49.70
14 x 5 x .75*	100	134.70	130.70	115.80

\* 2 piece set up

Size	Natural Kraft		Price per case	
	Case Pack	1 - 9	10 - 19	20
10 x 7 x 1.5	100	56.20	53.90	44.00
11.5 x 8.5 x 1.63	100	57.20	55.30	43.90
15 x 9.5 x 2	100	65.30	62.80	49.70
17 x 11 x 2.5	50	57.70	55.20	43.30
19 x 12 x 3	50	71.90	68.80	53.90
24 x 14 x 4	25	60.80	58.30	45.60

## White Giftware Boxes

White Gloss, one piece tuck bottoms, two piece pop-ups, two piece hi-walls. More than 30 sizes from which to choose. Everything you need for elegant gift packaging.



See page 14 and 15 for custom labels.

### White Gloss Gift Boxes

Price per case



Size	Case Pack	1 - 9	10 - 19	20
<b>White Gloss Tuck Bottom 1 piece</b>				
2 x 2 x 2	200	52.00	47.90	39.60
3 x 3 x 2	100	30.30	27.90	23.00
3 x 3 x 3	100	23.10	21.30	17.60
4 x 4 x 2	100	33.10	30.50	25.20
4 x 4 x 4	100	33.10	30.50	25.20
5 x 5 x 3	100	49.10	45.30	37.40
6 x 4.5 x 4.5	100	50.00	46.10	38.00
6 x 6 x 1	100	76.60	72.80	59.40
6 x 6 x 4	100	60.50	57.50	47.90
6 x 6 x 6	100	78.20	74.30	61.90
7 x 7 x 7	100	110.00	104.50	87.10
8.5 x 8.5 x 2	100	80.70	76.90	68.30
8 x 8 x 3.5	100	100.60	96.70	83.80
8 x 8 x 6	50	80.30	76.30	62.20
8.5 x 8.5 x 8.5	50	104.90	97.90	81.60
9 x 4.5 x 4.5	100	69.80	67.10	57.00
10.5 x 10.5 x 2.5*	50	80.30	76.30	62.20
10.5 x 10.5 x 5.5	50	116.20	110.40	90.10
12 x 3 x 3	100	84.40	79.20	67.90
12 x 6 x 6	50	78.00	74.10	61.80
12 x 12 x 2.5	50	98.00	93.50	76.20
12 x 12 x 5.5	50	150.10	142.60	118.90
12 x 12 x 9	50	241.00	231.40	196.10
14 x 14 x 3*	25	94.20	89.50	74.50
14 x 14 x 5*	25	95.50	91.70	83.30
15 x 7 x 7	50	92.20	88.00	80.50
15 x 11 x 4*	50	171.60	163.00	133.10
16 x 16 x 2.5*	25	100.10	93.90	83.60
16 x 16 x 7*	25	193.50	186.10	164.00

\* 2 piece pop up style

## Natural Kraft Pinstripe

100% recycled board, 80% post consumer waste.

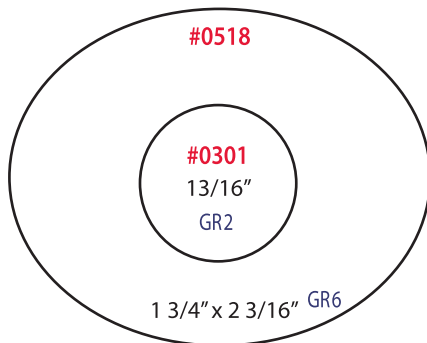
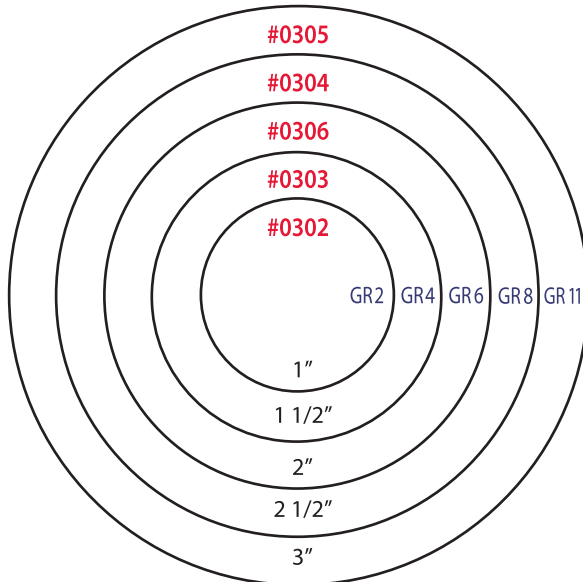
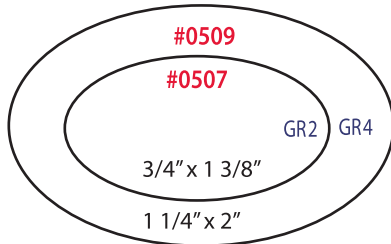
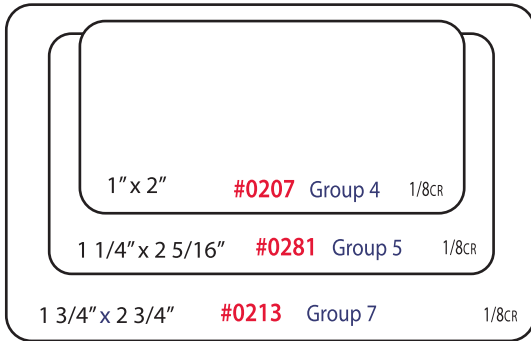
Size	Case Pack	1 - 9	10 - 19	20
<b>Natural Kraft Pinstripe 1 piece</b>				
3 x 3 x 3	100	25.30	21.30	18.00
4 x 4 x 4	100	30.50	25.80	21.10
5 x 5 x 3	100	53.80	43.00	36.60
6 x 4.5 x 4.5	100	43.80	36.50	31.80
6 x 6 x 4	100	56.80	47.90	41.80
6 x 6 x 6	100	73.30	61.90	54.00
7 x 7 x 7	100	79.60	65.20	53.10
8 x 8 x 3.5	100	86.70	75.10	68.00
9 x 4.5 x 4.5	100	59.00	51.00	46.20
10 x 10 x 6	50	110.40	84.90	73.60
12 x 6 x 6	50	69.00	57.00	49.40
12 x 12 x 2.5*	50	80.70	69.80	63.30
12 x 12 x 5.5*	50	111.90	96.70	87.80

\* 2 piece pop up

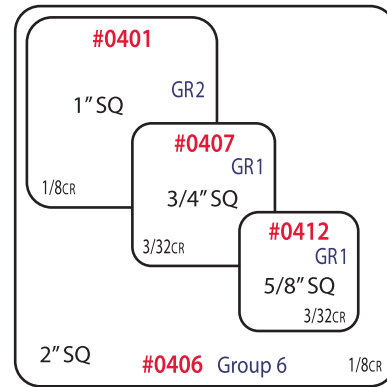




**Die Numbers in Red**



**DELUXE INK LABEL Background Colors**



**Deluxe Ink Label Pricing**

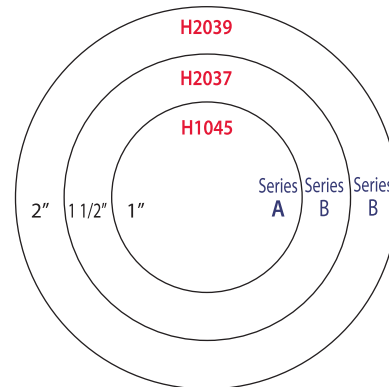
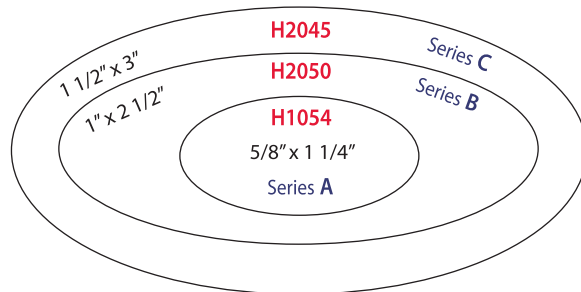
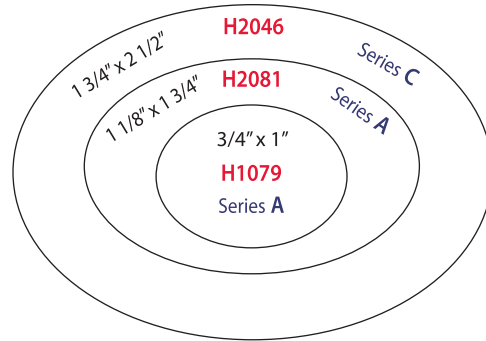
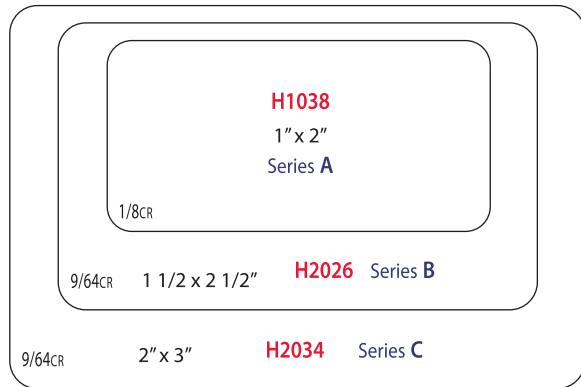
Group		1,000	3,000	5,000	10,000	20,000
1	1 Color	110.20	60.50	47.50	32.40	23.80
	2 Color	187.90	89.60	64.80	42.10	30.20
2	1 Color	116.60	69.10	50.80	35.60	24.80
	2 Color	198.70	102.60	73.40	45.40	32.40
3	1 Color	123.10	75.60	56.20	41.00	30.20
	2 Color	210.60	113.40	82.10	51.80	38.90
4	1 Color	129.60	81.00	60.50	43.20	32.40
	2 Color	220.30	119.20	84.20	55.10	42.10
5	1 Color	140.40	84.20	62.60	49.70	36.70
	2 Color	238.70	126.40	88.60	63.70	47.50
6	1 Color	145.80	94.00	64.80	57.20	44.30
	2 Color	246.20	139.30	94.00	73.40	57.20
7	1 Color	155.50	96.10	68.00	60.50	47.50
	2 Color	264.60	142.60	97.20	76.70	60.50
8	1 Color	162.00	99.40	70.20	62.60	49.70
	2 Color	275.40	146.90	101.50	81.00	63.70
9	1/Color	166.30	101.50	73.40	64.80	51.80
	2/Color	283.00	151.20	105.80	83.20	67.00
10	1/Color	168.50	103.70	75.60	68.00	55.10
	2/Color	287.30	154.40	109.10	87.50	70.20

**Additional Lot Charges**

- Plate-1 plate for **each color** (New Copy) . . . . . \$28.10
- Plate Change (Copy) . . . . . \$28.10
- Ink Change Charge (Imprint) . . . . . \$28.10
- Stock Change (Material) . . . . . \$28.10
- For custom PMS colors, add . . . . . \$82.10



Die Numbers in Red



Hot Stamp Label Pricing

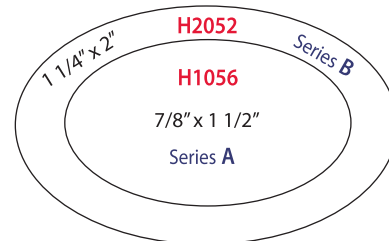
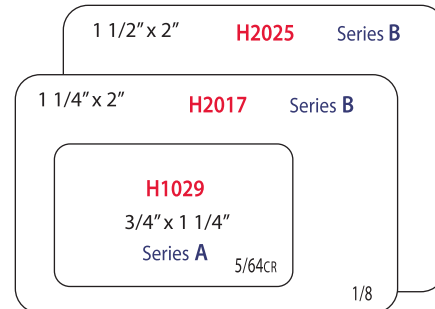
Series		1,000	3,000	5,000	10,000	20,000
A	1 Color	155.50	97.20	72.40	57.20	51.80
	2 Color	194.40	122.00	91.80	72.40	64.80
B	1 Color	171.70	102.60	74.50	62.60	57.20
	2 Color	214.90	128.50	95.00	78.80	72.40
C	1 Color	186.80	109.10	77.80	68.00	62.60
	2 Color	234.40	136.10	99.40	85.30	78.80
D	1 Color	218.20	124.20	85.30	73.40	65.90
	2 Color	273.20	154.40	113.40	92.90	84.20

Floodcoated Background Add Per M

108.00	49.70	37.80	21.60	13.00
--------	-------	-------	-------	-------

Additional Lot Charges

- Plate-1 plate for **each color** (NewCopy) . . . . . \$28.10
- Plate Change (Copy) . . . . . \$28.10
- Stock Change Charge (Material) . . . . . \$28.10
- Foil Change (Imprint) . . . . . \$28.10
- For custom PMS colors, add . . . . . \$82.10
- For custom PMS Floodcoat cost, add . . . . . \$82.10



**Hot Stamp Imprint Colors (Most Common)**

Other Colors Available

Black-21	Purple-19	Burgundy-26	Red-22	Dark Blue-48	Brown-25	Hunter Green-54
Bright Gold-31	Matte Silver-33	Metallic Purple-35	Metallic Red-36	Metallic Blue-37	Metallic Copper-32	Metallic Green-38

**Hot Stamp Background Colors (Most Common)**

Other Materials Available

Dull Gold 104	Greenbay Gold 115	Bright Gold 100	Dull Silver 109	Oatmeal 720	Kraft 712	Ivory Gloss 221	White Gloss 101	Black Gloss 700

**Solid Color Tissue**



**PEARLESENCE 1 Side**



T10219 Scarlet  
T10223 White

**PEARLESENCE® 2 Sides**



T10226 Antique Gold  
T10227 Antique Silver  
T10225 Sun Gold

**PEARLESENCE® 2 Sides Premium**



T10229 Bronze  
T10230 Copper

**PRECIOUS METALS 2 Sides**



T10291 Gold/Gold  
T10292 Silver/Silver

**Satin Wrap Tissue**

Price per package

Size	Sheets Per Pkg	1 - 9	10 - 19	20
<b>Colors</b>				
20 x 30	480	36.30	32.80	30.10
<b>White</b>				
15 x 20	960	21.00	18.80	17.70
20 x 30	480	21.00	18.80	17.70
<b>Natural Kraft</b>				
15 x 20	960	19.50	17.40	16.60
20 x 30	480	17.10	15.30	14.50
<b>Packing Tissue</b>				
20 x 30	*	134.70	124.40	115.50

\* weight is 50# for packing tissue

**Satin Wrap Tissue**

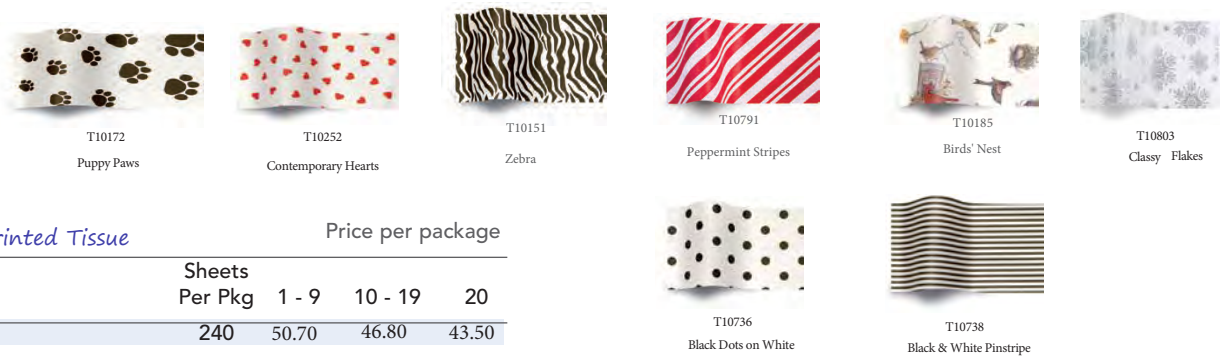
Price per package

Size	Sheets Per Pkg	1 - 9	10 - 19	20
<b>Precious Metals 2 Sides</b>				
20 x 30	100	47.20	44.90	42.70
<b>PEARLESENCE 1 Side</b>				
20 x 30	200	57.20	54.40	51.80
<b>PEARLESENCE® 2 Sides</b>				
20 x 30	200	64.70	61.50	58.50
<b>PEARLESENCE® 2 Sides Premium</b>				
20 x 30	200	86.10	81.80	77.90
<b>Popular Pack Assortment*</b>				
20 x 30	480	37.30	35.40	33.70

\*Popular Pack Assortment contains 24 sheets of each of the following colors: Black, Buttercup, Cabernet, Cerise, Citrus Green, Dark Pink, Evergreen, French Vanilla, Holiday Green, Kraft, Lavender, Light Blue, Parade Blue, Mandarin Red, Purple, Orange, Scarlet, Turquoise, White, and Yellow.



## Stock Printed Tissue



Stock Printed Tissue		Price per package		
Size	Sheets Per Pkg	1 - 9	10 - 19	20
20 x 30	240	50.70	46.80	43.50

## Custom Printed Satinwrap Tissue

Minimums start at 10 reams. Special sizes and put ups available.



### Satinwrap White & Kraft Tissue

Minimums start at 10 reams.

Sheet Size: 20 x 30

# of Reams: 10 Reams

Features: 1-Color, PMS Scatter Print on White or Kraft Tissue

Packing: Single-Ream wrapped (480 Sheets) ships 5 reams per case.

Ink Coverage: 25% or Less.

Ink Type: Non-Metallic: Add 5% for Metallic ink. Deduct 5% for White ink.

Plate Charge: \$340 Digital Art Required. Vectorized PDF/EPS/AI file at least 300 dpi Resolution  
 Pricing: \$80.70/Ream (480 Sheets)  
 F.O.B. Gardener, MA 01440

#### Tissue Colors Available:

White, Kraft.



### Satinwrap Colored Tissue

Minimums start at 10 reams.

Sheet Size: 20 x 30

# of Reams: 10 Reams

Features: 1-Color, PMS Scatter Print on White or Kraft Tissue

Packing: Single-Ream wrapped (480 Sheets) ships 5 reams per case.

Ink Coverage: 25% or Less.

Ink Type: Non-Metallic: Add 5% for Metallic ink. Deduct 5% for White ink.

Plate Charge: \$340 Digital Art Required. Vectorized PDF/EPS/AI file at least 300 dpi Resolution  
 Pricing: \$97.00/Ream (480 Sheets)  
 F.O.B. Gardener, MA 01440

#### Tissue Colors Available:

Black, Buttercup, Cabernet, Citrus, Claret, Evergreen, French Vanilla, Holiday Green, Ivory, Khaki, Lavender, Midnight Blue, Olive, Orange, Pacific Blue Purple, Scarlet, Tan.

Additional colors available, see color chart on page 18.

## Candy Bags

Clear polypropylene, stand-up bags with reinforced bottoms are moisture resistant and FDA approved for direct food contact.



### Hard Bottom Candy Bags

Price per case

Size	Case Pack	Price per case		
		1 - 9	10 - 19	20
<b>Clear</b>				
1.75 x 1.75 x 8.5	100	35.00	32.10	30.10
2.63 x 1.88 x 10.25	100	37.50	34.40	32.20
3.25 x 2 x 12	100	45.60	41.80	39.20
<b>Gold Stripe</b>				
1.75 x 1.75 x 8.5	100	46.30	42.70	39.70
2.63 x 1.88 x 10.25	100	55.30	51.00	47.40
3.25 x 2 x 12	100	67.20	62.00	57.60

## TIN-TIE BAGS

Approved for direct food contact.  
 75 gauge polypropylene  
 liner keeps contents fresh.



WHITE AND NATURAL KRAFT

CONTACT US FOR QUOTE

## NATURAL KRAFT WINE HANDLETOTE™



NATURAL & WHITE KRAFT BREAD/BOTTLE MERCHANDISE BAGS

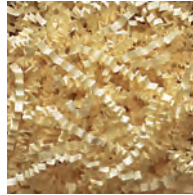


CONTACT US FOR QUOTE

## Accordion Paper Shred



Kraft



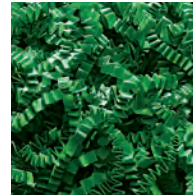
French Vanilla



White



Red



Green



Black



Royal Blue



Lime Green

### Accordion Paper Shred

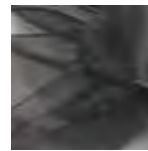
Drop Ship Only

Colors	Lbs	1-9	10-19	20
Natural Kraft	10	34.10	33.70	33.40
White	10	41.50	41.10	40.70
Colors	10	51.60	51.10	50.60

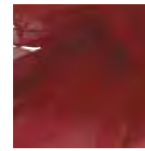
\*Additional freight charges may apply due to dimensional weight charges.

## Simply Sheer Ribbon

Elegant, easy to use and stocked in a variety of gorgeous colors.



Black



Burgundy



Champagne



Hunter Green



Citrus Green



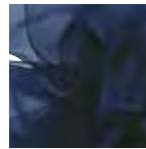
Ivory



Fuschia



Gold



Navy



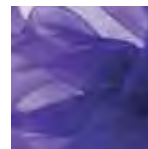
Pink



Red



Tropical Orange



Purple



Silver



Royal Blue



Robin Egg Blue



White

### Simply Sheer Ribbon

Size	Price per roll		
1-1/2" x 100 yds.	1 - 9	10 - 19	20
	18.80	17.30	15.70



## Wraphia

Matte and Pearlized in a wide range of colors.



### Wraphia

Size	Price per roll		
	1 - 9	10 - 19	20
100 yds.	4.30	3.70	3.20

### Matte and Pearlized

### Matte



### Pearlized



## Splendorette® Curling Ribbon



### Curling Ribbon Colors



### Curling Ribbon

Size	Price per roll		
	1 - 9	10 - 19	20
3/8" x 250 yds.	4.30	3.70	3.20

## Stretch Loops



### Stretch Loops - Gold and Silver Price per package

Size	Loops Per Pkg	Price per package		
		1 - 9	10 - 19	20
11"	250	21.90	20.10	18.20
22"	250	31.70	29.20	26.40

**1. To Order:**

- By Phone [800.323.1609](tel:800.323.1609)/ [847.675.7650](tel:847.675.7650)  
Monday - Friday, 8:30am to 4:30pm CST.
- Online anytime at [www.howardpkg.com](http://www.howardpkg.com)
- By Fax [847.675.9042](tel:847.675.9042)

**2. No Minimum Order. Order just one case of anything.**

**3. Fast Shipping:**

- In-stock orders are usually shipped within 24 hours. Some products not stocked in our Illinois warehouse may require additional time.

**4. Shipping Terms:**

- All products ship F.O.B. our warehouse via the least expensive carrier.

**5. Credit:**

- We accept Visa, Mastercard and American Express.



- Net 30 day accounts are available subject to credit approval.
- We do not ship C.O.D.

**6. Prices:**

- Prices are effective 09/01/2021
- Prices are subject to change without notice.
- Please visit our website [www.howardpkg.com](http://www.howardpkg.com) for the most current color, size and pricing information.
- All orders are subject to shipping and handling charges.

**7. Multi-Item Discount**

- Multiple items combine for the best quantity pricing regardless of what type of item they are.
- Every size, every color, every single stock product can be combined for the total unit quantity pricing on all pages of this catalog.

**8. Free Samples:**

- We welcome the opportunity to send you product samples free of charge.

**9. Other Packaging Products:**

- We can special order or custom manufacture hundreds of other packaging items that are not listed here.
- Please call for more information.

**10. Return Policy:**

- Items must be pre-approved for return and will be subject to a 20% re-stocking fee.
- Drop ship items, special order and custom printed products may not be returnable.



Look for our **PRINT IT** icon throughout this catalog.  
Imprinting is available on these products at low minimums.  
Call for pricing information and more details.

**Four Time Winner of the Retail Packaging Association Distributor of the Year Award**

 Paper Shopping Bags

 Plastic Bags

 Giftware and Jewelry Boxes

 Food Packaging

 Custom Printed Packaging

 Gift Wrap and Tissue

 Ribbons and Bows

 Labels and Tags

 and More...

See our line of Sustainable Packaging on pages 2 - 3.



howard packaging

3462 W. Touhy Ave.  
Skokie, IL 60076

800.323.1609  
www.howardpkg.com

*Four Time Winner of the Retail Packaging Association  
Distributor of the Year Award.*

